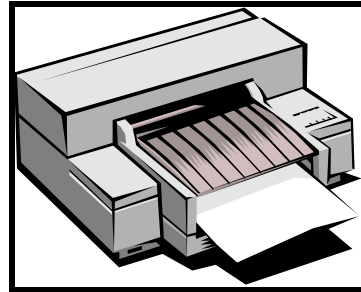
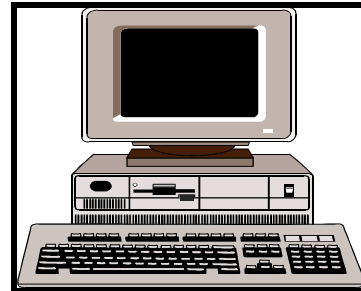


MLS from ALPHA COMMUNICATIONS®

ALPHA-LOG v4.1 Rev.G

**PATIENT CALL MONITORING
CALL RECORDING, PERFORMANCE REPORTS
ALPHANUMERIC PAGING**



installation/owners manual

Alpha Communications®

TOLL-FREE Technical Line 1-80-666-4800

42 Central Drive - Farmingdale NY 11735-1202

Phone: 631-777-5500 Fax: 631-777-5599

Website: www.alpha-comm.com Email: info@alpha-comm.com

AWD074 Rev. 1 (08/02)

***** NOTICE *****

The alphanumeric paging feature of Alpha-log is extremely reliable at sending nurse call messages to pocket pagers. The system sends messages to your pager(s) using a relatively high power radio signal. This signal has considerable range and has the ability to reject radio "noise" which could corrupt the message being sent.

Although Alpha-log is extremely reliable, it must only be used as supplemental call annunciation in life safety applications such as nurse call. Alpha-log should only be used to enhance the efficiency of a nurse call system by providing additional, immediate call notification via wireless paging. Micro Logic Systems shall not be held liable for incidental or consequential damages resulting from annunciation failure.

INTRODUCTION

Alpha-log is a hardware/software system designed to be used in conjunction with a nurse call system. The purpose of Alpha-log is to monitor and increase the efficiency of patient care and to provide a communications tool for health care personnel. Alpha-log is used with a personal computer. Information about every patient call placed is recorded in the personal computer (PC). The date, call start time, call end time, a user programmed description (patient name, room number, health condition, etc.), and call type (routine, priority) are all recorded. System users can create reports from this data using the included Windows software. Many reports are available. The user can easily specify what type of report is desired. For example, you may wish to view all calls that occurred on a particular day, week, or month. You can determine to average response time for all calls, or all calls from 9:00 AM to 5:00 PM (the start time and end time is user programmable). You may wish to know what percent of calls were responded to within 5 minutes on a particular day on second shift, or what percent of calls lasted more than 10 minutes on first shift during the last week. Many other useful reports are available to you. A detailed description can be found under *call activity reports*.

In addition to call data recording, Alpha-log improves patient care by immediately notifying nursing personnel of patient calls using pocket pagers. Within seconds after a patient places a call, a user programmed description of the call is sent to pagers worn by nursing personnel, for example, "Jack Jones, room 101A". This allows nurses to receive patient calls no matter where the nurse is in the building. Nurses are made aware of patient calls without having to be near call lights or buzzers. This improves call response times.

A message can be sent to a specific person (to their pocket pager) at any time using the *messenger* feature of Alpha-log. This reduces or eliminates the need for loud, annoying overhead voice paging. A detailed description is found under *Messenger*.

The *Memo Page* feature allows users to program Alpha-log to transmit memo's to the pocket pagers. For example, a nurse might program Alpha-log to send the memo "medication-Mr. Jones" every morning at 9:00AM. Up to 300 memo's can be programmed. See *Memo Page* for details.

MLS-EC1 ENCLOSURE INSTALLATION

Most of the hardware interface portion of the Alpha-log system fits in the MLS-EC1 surface-wall mount enclosure. Determine a suitable location for the MLS-EC1. Remember, one wire for each room (or patient call station) needs to be run to the MLS-EC1. This can come directly from a room station, from a corridor light or, if there is an annunciator panel (light board where all calls appear), one wire for each room can be run from the annunciator panel to the MLS-EC1 enclosure. Locate the MLS-EC1 in a location that will allow the most convenient means of running the required wiring between the nurse call system and Alpha-log. Refer to drawings C022397-1 and C022397-2 for enclosure dimensions and mounting hole locations.

ROOM WIRING

An annunciator wire (call signal wire) for each room/patient must be connected to a MLS-32L signal input board. The signal may come directly from a room station, from a corridor dome light, or can be parallel connected to the call light/LED of the annunciator panel (light board showing all calls). The annunciator panel is usually located at the nurses station. Refer to the drawings in this manual for basic wiring schematics. Note that there must be a connection between the nurse call power supply and the "COM" terminal of the MLS-SPU1 board. If the nurse call system is the common negative type (positive is switched to place call), then nurse call power supply negative (-) must be connected to the "COM" terminal of the MLS-SPU1 board. If the nurse call system is the common positive type (negative is switched to place call), then nurse call power supply positive (+) must be connected to the "COM" terminal of the MLS-SPU1 board. If the nurse call system is powered by an AC transformer, the common (un-switched) side of the transformer must be connected to the "COM" terminal of the MLS-SPU1 board (drawing C031698-1).

Alpha-log can monitor up to 256 rooms/patients. Each MLS-32L signal input board can accommodate 32 inputs. Therefore, more than one MLS-32L board is required if more than 32 inputs are being monitored, up to eight MLS-32L boards can be used. The system can be expanded at any time by simply adding additional MLS-32L boards. Each MLS-32L board is programmed with an "address" (1-8) which identifies it from the other MLS-32L boards. Programming is accomplished by placing a programming jumper over stake-pin pair 1-8 on the MLS-32L board (refer to drawing C022397-3). Later, each input will be programmed with its own description and room number. Therefore, the contractor terminating annunciator wires should record on the sheets that follow the room number that corresponds to each MLS-32L input number. Terminals 1-32 on the MLS-32L board addressed as #1 are programming inputs 1-32, respectively. Terminals 1-32 on the MLS-32L board addressed as #2 are programming inputs 33-64, respectively. Refer to the chart Relationship between MLS-32L terminal number, MLS-32L board number and programming input number for a complete reference guide.

Room wiring is connected to pluggable terminal blocks on the MLS-32L boards, refer to drawing C030497-1. MLS-32L boards are plugged into the MLS-32L sockets of the MLS-SPU1 board, refer to drawings C022397-4 and C030297-1. Any MLS-32L board number (address) may be plugged into any of the eight sockets on the MLS-SPU1, the order does not matter. MLS-32L boards are held securely in place by placing #6-32 mounting screws through the "L" brackets of the MLS-32L and into the MLS-32L mounting studs located in the MLS-EC1 enclosure.

Relationship between MLS-32L terminal number, MLS-32L board number
and programming input number

	MLS-32L board number							
	#1	#2	#3	#4	#5	#6	#7	#8
terminal:								
1	001	033	065	097	129	161	193	225
2	002	034	066	098	130	162	194	226
3	003	035	067	099	131	163	195	227
4	004	036	068	100	132	164	196	228
5	005	037	069	101	133	165	197	229
6	006	038	070	102	134	166	198	230
7	007	039	071	103	135	167	199	231
8	008	040	072	104	136	168	200	232
9	009	041	073	105	137	169	201	233
10	010	042	074	106	138	170	202	234
11	011	043	075	107	139	171	203	235
12	012	044	076	108	140	172	204	236
13	013	045	077	109	141	173	205	237
14	014	046	078	110	142	174	206	238
15	015	047	079	111	143	175	207	239
16	016	048	080	112	144	176	208	240
17	017	049	081	113	145	177	209	241
18	018	050	082	114	146	178	210	242
19	019	051	083	115	147	179	211	243
20	020	052	084	116	148	180	212	244
21	021	053	085	117	149	181	213	245
22	022	054	086	118	150	182	214	246
23	023	055	087	119	151	183	215	247
24	024	056	088	120	152	184	216	248
25	025	057	089	121	153	185	217	249
26	026	058	090	122	154	186	218	250
27	027	059	091	123	155	187	219	251
28	028	060	092	124	156	188	220	252
29	029	061	093	125	157	189	221	253
30	030	062	094	126	158	190	222	254
31	031	063	095	127	159	191	223	255
32	032	064	096	128	160	192	224	256

input number	Room/station
1	
2	
3	
4	
5	
6	
7	
8	
9	
10	
11	
12	
13	
14	
15	
16	
17	
18	
19	
20	
21	
22	
23	
24	
25	
26	
27	
28	
29	
30	
31	
32	

input number	Room/station
33	
34	
35	
36	
37	
38	
39	
40	
41	
42	
43	
44	
45	
46	
47	
48	
49	
50	
51	
52	
53	
54	
55	
56	
57	
58	
59	
60	
61	
62	
63	
64	

input number	Room /station
65	
66	
67	
68	
69	
70	
71	
72	
73	
74	
75	
76	
77	
78	
79	
80	
81	
82	
83	
84	
85	
86	
87	
88	
89	
90	
91	
92	
93	
94	
95	
96	

input number	Room /station
97	
98	
99	
100	
101	
102	
103	
104	
105	
106	
107	
108	
109	
110	
111	
112	
113	
114	
115	
116	
117	
118	
119	
120	
121	
122	
123	
124	
125	
126	
127	
128	

input number	Room/station
129	
130	
131	
132	
133	
134	
135	
136	
137	
138	
139	
140	
141	
142	
143	
144	
145	
146	
147	
148	
149	
150	
151	
152	
153	
154	
155	
156	
157	
158	
159	
160	

input number	Room/station
161	
162	
163	
164	
165	
166	
167	
168	
169	
170	
171	
172	
173	
174	
175	
176	
177	
178	
179	
180	
181	
182	
183	
184	
185	
186	
187	
188	
189	
190	
191	
192	

input number	Room/station
193	
194	
195	
196	
197	
198	
199	
200	
201	
202	
203	
204	
205	
206	
207	
208	
209	
210	
211	
212	
213	
214	
215	
216	
217	
218	
219	
220	
221	
222	
223	
224	

input number	Room/station
225	
226	
227	
228	
229	
230	
231	
232	
233	
234	
235	
236	
237	
238	
239	
240	
241	
242	
243	
244	
245	
246	
247	
248	
249	
250	
251	
252	
253	
254	
255	
256	

CONNECTING ALPHA-LOG TO THE PERSONAL COMPUTER

The Alpha-log interface communicates with the personal computer (PC) via one of the computer's RS-232 serial communications (COM) ports. If the interface equipment (MLS-EC1 enclosure) will be located in close proximity to the PC, no more than 50 feet, then connect the MLS-SPU1, MLS-SPA, and PT-400 to the PC using drawing #C102798-1. If Alpha-log is equipped with the battery back-up option and the PC is connected to a UPS power supply, plug the power supply for the PT-400 transmitter into the PC's UPS power supply so that Alpha-log will remain 100% operational during a power failure.

If the interface equipment (MLS-EC1 enclosure) will be located remotely from the PC, MLS-232 serial port extenders are required to transmit the RS-232 data between the interface equipment and the PC. Make the connections shown on drawings #C102798-2 and #C102798-3. If Alpha-log is equipped with the battery back-up option and the PC is connected to a UPS power supply, plug the power supply for the PT-400 transmitter into the PC's UPS power supply so that Alpha-log will remain 100% operational during a power failure.

PC SOFTWARE INSTALLATION

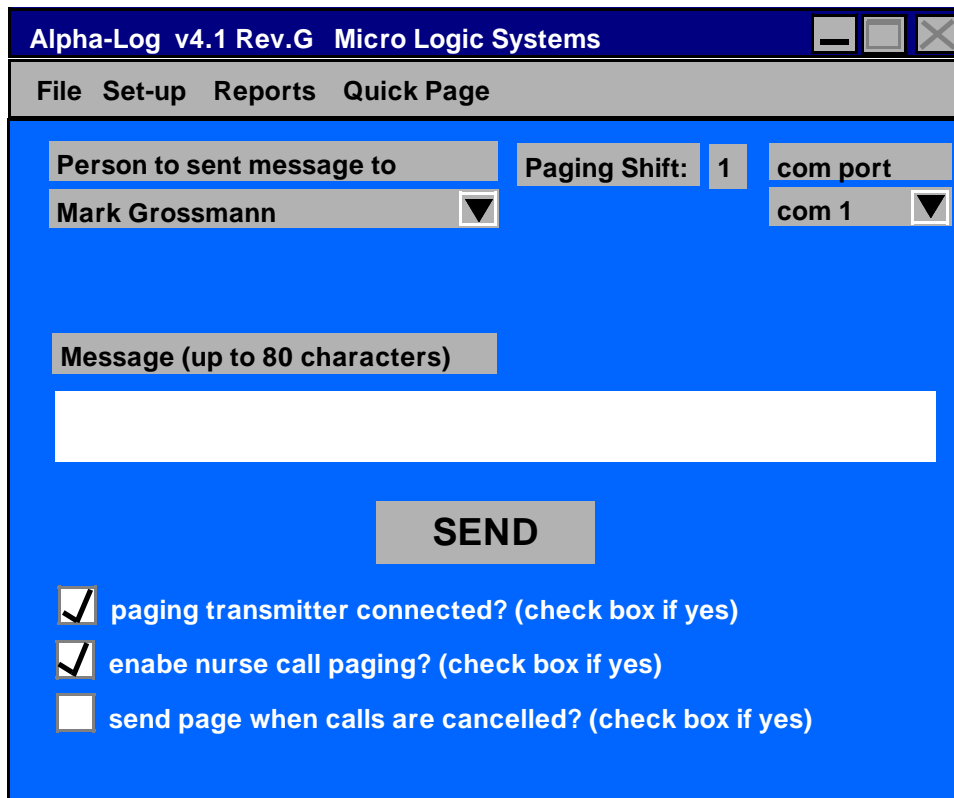
Insert the Alpha-log 3 1/2" diskette into the 3 1/2" drive of the PC. From the Windows File Manager, click on the 3 1/2" drive icon. Double-click on **setup.exe**. Four files will be put into the Windows\System directory. The C:\alog41 directory will be created on the hard drive. The Alpha-log software program, **alog41.exe** will be put in that directory. The program can now be run by double-clicking on it from the File Manager program. It may be desirable to create a *shortcut* to Alpha-log. This will allow the program to run by simply clicking (or double-clicking) on an icon.

Creating a shortcut to Alpha-log in Windows95:

- Click on the **Start** button located in the lower left corner of the screen.
- Move up to **Settings** and click on **Taskbar**.
- Click on the **Start Menu Programs** tab.
- Click on the **Add...** button.
- Type **C:\alog41\alog41.exe** on the command line, then click on the **Next>** button.
- On the screen that now appears, decide where you would like the shortcut to appear, then click on the **Next>** button.
- You are then asked to select a name for the shortcut, type **Alpha-log**. Then click on the **Finish** button.

To create a shortcut in other versions of Windows, follow the directions in the Windows book included with the computer or use the online help feature of Windows.

USING ALPHA-LOG



Alpha-Log v4.1 Rev.G Micro Logic Systems

File Set-up Reports Quick Page

Person to sent message to Mark Grossmann

Paging Shift: 1

com port com 1

Message (up to 80 characters)

SEND

paging transmitter connected? (check box if yes)

enable nurse call paging? (check box if yes)

send page when calls are cancelled? (check box if yes)

Alpha-log main screen

When Alpha-log is started, the main screen will appear. Alpha-log is a data logging **and** message paging system. Alpha-log can be used for data logging without using the paging feature (paging could then be added at any time). If the paging feature isn't being used, un-check the "paging transmitter connected?" check box on the main screen by clicking on the box with the mouse. The nurse call system is connected to one of the PC's serial communication (com) ports. You need to tell Alpha-Log which com port is being used. On the main screen, click with the mouse the down-pointing arrow under the label "com port". From the list of com ports, click on the one that the nurse call system is connected to. Alpha-Log will not function until the proper com port is selected. The selected port is opened 20 seconds after Alpha-Log is run. At that time, the selected COM port changes from green to black on the screen. The COM port selection CAN be changed at any time, however, if an unavailable COM port is selected, a "Device Unavailable" error will occur. You will have to re-start Alpha-Log. When Alpha-Log is run for the first time, COM1 is selected as the default. Your COM port selection is saved when Alpha-Log is exited by clicking on Exit under the File menu. Then, when Alpha-Log is re-run, your previous COM port selection is used until you change it again.

Whenever Alpha-log is running, it is automatically monitoring and recording all patient calls. Also, when each patient call is placed, a call description is sent to your pager(s) if the "enable nurse call paging" box is checked. The description might include the patients name, room number, and perhaps a brief note regarding the patients health. NOTE: if more than one copy of Alpha-Log is connected to the nurse call system, only ONE copy should have "enable nurse call paging" checked. You will need to program Alpha-log with your call descriptions. If the "send page when calls are cancelled" check box is checked, a page will also be sent when each call is cancelled. The page will consist of the call description plus "-call cancelled". Check the check box by clicking on it with the mouse. Un-check it by clicking on it again.

When a patient places a call, a call signal is received by the Alpha-log electrical interface. The call signal wire from each patient room (or each call station, there may be more than one call station in a room) is connected to a terminal at the electrical interface. The electrician who connected the call signal wires to the electrical interface should have noted which patient room/patient call station was connected to each input at the electrical interface. refer to the charts located in this manual. You will use that information to program the call descriptions.

On the Alpha-log main screen, click on the **set-up** menu. Then click on **data logging**. The data logging set-up screen will appear.

Alpha-log v4.1 Micro Logic Systems (data logging set-up)

Input	Room #	Description (up to 40 characters)	Primary Capcode	
1	101A	John Jones-pneumonia	2010201	shift 1
			2010201	shift 2
			2010201	shift 3
<div style="display: flex; justify-content: space-between;"> <div style="border: 1px solid black; padding: 5px;"> call <input checked="" type="radio"/> routine <input type="radio"/> priority </div> <div style="text-align: center;"> <<< Backward Forward >>> </div> </div>			Secondary Capcode	
Return to Main Screen			2010209	shift 1
			2010201	shift 2
			2010201	shift 3
Minutes until Secondary capcode is paged:			1	Final Capcode
Minutes until final capcode is paged:			3	
			2010201	shift 1
			2010201	shift 2
			2010201	shift 3

Data logging set-up screen

From this screen, a room number, description, call type, primary, secondary, and final pager capcodes (for each of up to three shifts) will be programmed for each input of the electrical interface. Remember, call signals from each room/patient are wired to an input of the electrical interface. Let's assume that the call signal wire for the call station in room 101A (John Jones' room) is connected to input 1 at the electrical interface. Make sure "1" appears in the input box located in the upper left corner of the screen. That means you are programming input 1. To increment the input number by 1, click on the Forward>>> button with the left mouse button. To increment the input number by 10, click on the Forward >>> button with the right mouse button. The <<< Backward button decrements the input number. Again, make sure "1" appears in the input box. Type in the room number in the room # box (6 characters max.). Use the TAB key or the mouse to move the cursor to the description box. Type in a description.

You may wish to change the default capcodes (See **Capcodes**, next page) that appear in the nine capcode boxes. The nine capcode boxes allow you to specify which pager(s) will receive nurse call pages. There is a primary, secondary, and final page for each of three shifts. The **shift paging** feature allows nurse call pages from any patient to be routed to different nursing personnel depending on the time of day. To set up paging shifts, from the main screen, click on the **set-up** menu, then click on **Shifts**. Use the up/down arrows to select the *starting time* for each shift. Click the AM/PM button to toggle between AM and PM. Any of the three shifts can be set to begin at any time of the day. Shifts can last for any length of time. For example, let's assume that shift 1 is set to 9:00 AM and shift 2 is set to 5:00 PM, and shift 3 is set to 11:00 PM. At 9:00 AM each morning, Alpha-Log will *automatically* be operating in paging shift 1. At 5:00 PM each day, Alpha-Log will automatically switch to paging shift 2, and at 11:00 PM, paging shift 3 is activated. If the "activated" box isn't checked under a shift time, that shift is ignored. This allows you to operate using just two shifts. For example, program a start time for any two shifts, and un-click the "activated" box for the remaining shift. If all three shifts are not activated when Alpha-Log is started, shift 1 is used. If all three shifts are de-activated during operation, Alpha-Log will remain in its current paging shift. Shift data is saved on the hard drive, if Alpha-Log is shut down, shift programming data is maintained. The current paging shift is displayed on the main screen.

Primary capcodes designate which pager(s) will immediately receive call notification. If a call isn't responded to/cancelled within a specified time frame, Alpha-log can re-send call notification to a different, secondary capcode. To use this feature, specify how long Alpha-log should wait before transmitting call notification to the second pager by entering the number of minutes in the "Minutes until secondary capcode is paged:" box (1-3 digits). If you specify 0 minutes, the feature is disabled for that patient. The time delay for this feature (and for final page) can be different for each patient. Alpha-Log can send a third, final page to a third capcode if the call isn't responded to/cancelled within the number of minutes entered in the "Minutes until final capcode is paged:" box (1-3 digits). The number is minutes until the final capcode is paged should be longer than the number if minutes until the secondary capcode is paged. If the minutes until the final capcode is paged is set to 0, the final page feature for that patient is disabled. Enter primary, secondary, and final page capcodes (if used) for each shift that is being used. For example, primary, secondary, and final capcodes entered in the shift 1 boxes apply when Alpha-Log is operating in paging shift 1. Finally, decide if this input will be a routine call or

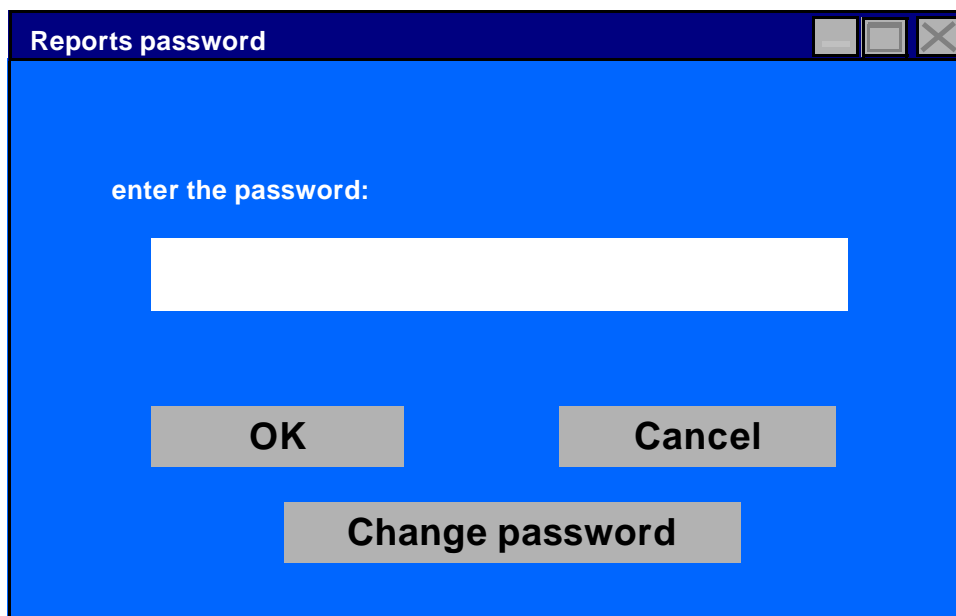
priority call by clicking on "routine" or "priority" in the call type box. It may be desirable to designate the call a priority call if that patient is particularly ill. In some applications, there will be two separate call stations in a patient room, one next to the bed, and one in the bathroom. If the two stations are wired to two separate inputs at the electrical interface, you may wish to designate the input that the bed station is connected to as routine and designate the input that the bathroom station is connected to as priority. Generally, a patient will not place a call from the bathroom unless the situation is critical. When a patient places a call designated as priority, the message sent to the pager(s) will include the call description plus "-priority". Input programming can be edited at any time. For a paper print-out of the description, capcodes, call type, room number, secondary page delay, and final page delay currently programmed for each input, click on the **Reports** menu on the main screen. Then click on **Print setup data**.

Capcodes

All pagers included with Alpha-log contain at least two capcodes. A capcode is a number programmed in the pager (at the factory) that gives the pager a unique identity. A capcode is similar to a telephone number. For example, when you dial a particular phone number, a connection is established between you and one specific receiver, the person you wish to speak with. When you program capcodes for an input (room/patient), you are designating which pager or pagers the call description will be sent to when the patient places a call. Paging differs from the telephone analogy in that you may want the call description to go to all of the pagers (all nurses). Remember, each pager contains multiple capcodes. All pagers contain capcode "2010201". If you specify capcode 2010201, the call description will be received by all of the pagers. You can have call descriptions for a particular patient sent to a particular nurse by typing a unique capcode in that nurses' pager in the capcode boxes on the screen shown on the previous page. All capcodes programmed in each pager are labeled on the back of the pager.

CALL ACTIVITY REPORTS

To create and view call activity reports, click on the **Reports** menu on the main screen, click on **Call reports**. Before call activity reports can be created, the correct password must be entered. This prevents unauthorized personnel from viewing call data. When "Reports" is selected from the main screen, the Reports password screen appears.



The image shows a screenshot of a software window titled "Reports password". The window has a blue background and a dark blue title bar with the text "Reports password" and standard window control buttons (minimize, maximize, close). The main content area contains the text "enter the password:" in white. Below this text is a white rectangular input field. At the bottom of the window, there are three buttons: "OK", "Cancel", and "Change password", all in white text on a grey background.

Reports password screen

To enter the Reports set-up screen, type the password then click on "OK". **The default password is "alpha"**. Passwords ARE case sensitive, ALPHA is not the same as alpha. To change the password, first enter the current password then click on "Change password". Enter the new password then click on "OK". Clicking on "Cancel" will return you to the main screen.

Report set-up screen

Alpha-log allows a variety of call activity reports to be created on the computer screen and printed on paper. The report set-up screen allows the user to quickly create the desired report. There are two basic report types. From the *select report type* box, you will select which type you would like by clicking on *display all calls*, *display performance data*, or *Exception-calls >10 min.* with the mouse pointer. If *display all calls* is selected, the report will show the date, start time, end time, duration of call, type of call, and a description of **each** call. A sample screen of this report type is shown at the top of the next page.

Alpha-log v4.1 Micro Logic Systems (call data)						
start date 03-23-1998 end date 03-23-1998 shift:all day call type:all calls rooms:all rooms						
Date	Description	Room	Start time	End time	Min.	R/P
03-23-1998	Mark Grossmann	101A	8:05 AM	8:11 AM	6	R
03-23-1998	Heather Freeman	115B	8:09 AM	8:14 AM	5	P
03-23-1998	Judy Roth	147B	8:55 AM	9:11 AM	16	P
03-23-1998	Mark Grossmann	101A	10:12 AM	10:19AM	7	R
03-23-1998	Stacy Armstrong	213B	10:14 AM	10:17AM	3	R
03-23-1998	Kurt Becker	201A	1:09 PM	1:18 PM	9	P
03-23-1998	Heather Freeman	115A	1:37 PM	1:57 PM	20	P
03-23-1998	David Ryan-pneumonia	225	1:44 PM	1:51 PM	7	P
03-23-1998	Dan Peters	113B	2:05 PM	2:23 PM	18	R
03-23-1998	Judy Roth	147B	2:44 PM	2:50 PM	6	P
03-23-1998	Heather Freeman	115B	3:11 PM	3:13 PM	2	P
03-23-1998	Kurt Becker	201A	3:13 PM	3:30 PM	17	R

display all calls-report

If *display performance data* is selected, a report is generated which shows overall call response data, not information on any particular call. A sample screen of this report type is shown below.

Alpha-log v4.1 Micro Logic Systems (performance data)			
start date 03-04-1998 end date 03-23-1998 shift:all day rooms:all rooms			
Routine calls:	225	Average response time (min.):	8
Priority calls:	124	Average response time (min.):	5
Total calls:	349	Average response time (min.):	6
Routine calls under 5 min.:	32	Percent of routine calls under 5 min.:	14
Priority calls under 5 min.:	83	Percent of priority calls under 5 min.:	67
Routine calls 5-10 min.:	174	Percent of routine calls 5-10 min.:	77
Priority calls 5-10 min.:	30	Percent of priority calls 5-10 min.:	24
Routine calls over 10 min.:	19	Percent of routine calls over 10 min.:	8
Priority calls over 10 min.:	11	Percent of priority calls over 10 min.:	9

display performance data-report

If *Exception-calls >10 min.* is selected, a report similar to the "display all calls" report is created. However, only calls with a duration over 10 minutes are displayed.

For each report type, the following report set-up information applies. The report set-up screen allows you to quickly create a customized report. The information may be entered in any order.

The *start date* and *end date* boxes allow you to specify the time period the report will cover. Use the mouse pointer or TAB key to move the cursor to each data box. Dates must be entered in the form mm-dd-yyyy. The end date must be equal to the start date or be a later date. Valid dates range from 01-01-1998 to 12-31-2025.

The *select time frame* box gives you the option to select all calls regardless of the time they began or to only include calls that occurred during a specified shift. Click on the left and right arrows to change the shift start and end times. The time shown will adjust in half-hour steps.

The *select room/rooms* box allows you to select which room numbers will be included in the report. If *all rooms* is selected, call data from all rooms will be included in the report. If *group of rooms* is selected, the report will only include call information from the specified group of rooms. You are allowed up to eight groups of room numbers. Each group can contain up to 99 room numbers. When *group of rooms* is selected, the report will only contain call information from the room(s) in the selected group. To select a group, click on the up or down pointing group select arrows above the Group x label. Click on the up or down pointing arrows to the right of the group select arrows to view or enter room numbers. Room numbers may contain up to six characters. If a particular nurse is responsible for certain patients, you may program a group with only those room numbers containing his/her patients. You can then view the call response data for that nurse by selecting his/her group of rooms. You may check the call response received by a single patient by programming a group with only that patient's room number. You can then view the call response data for that patient by selecting his/her group number. Groups can be reprogrammed at any time. Clicking on the *clear* button will clear all room numbers from the selected group.

The *select call type* box allows you to select which call types will be included in the report. Select *all calls* to include routine **and** priority calls. Select *routine calls* to include only routine calls in the report. Select *priority calls* to include only priority calls in the report.

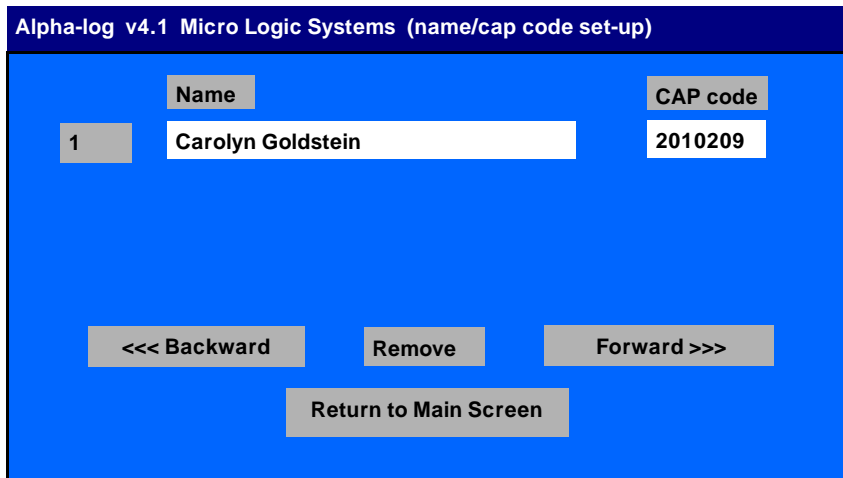
The *get data from drive:* box allows you to specify a data source for the report, the current database on the hard drive (C:) or data from a previously created backup disk (A:)-see DATA BACKUP.

When your report set-up is complete, click on the *continue...* button to show the report on the computer screen. You can click on *return to main screen* at any time to exit the report set-up screen. Click on *New report* to create another report.

Once the report is shown on the screen, you can print it on paper by clicking on the *print report* button. The reports will appear slightly different on paper than on the computer screen.

MESSENGER

The messenger feature of Alpha-log allows you to instantly send a message to any or all of the nurse call pagers. This allows you to get a message to a specific person anyplace in or around the building (including outdoors) without noisy and annoying overhead voice paging. Before the messenger feature can be used, it must be set-up. Click on the **Set-up** menu near the upper left corner of the main screen. Then click on **messenger**. The name/cap code set-up screen will appear.



As the screen name suggests, you will be linking each person who will carry a pager to the unique capcode programmed in their pager. By using the unique capcode, you will be able to send a message to (and only to) the person you want. Enter the persons name in the name box. Use the mouse or TAB key to move the cursor the the capcode box.

name/capcode set-up screen

Enter the unique capcode in the pager that person will carry. Continue by clicking on the *Forward>>>* button. Follow the same procedure for each person. Move forward and backward through the names by clicking on the *Forward >>>* and *<<< Backward* buttons. Clicking with the left mouse button moves you one space. Clicking with the right mouse button moves you ten spaces. At times it may be useful to send a message to everyone at once such as "staff meeting at 2:00 PM today". In the name box, type the word "everybody". In the capcode box, type "2010201". All pagers contain the capcode 2010201, therefore, everybody will receive the message when "everybody" is selected from the *Person to send message to* menu on the main screen. Name/capcode programming can be changed/edited at any time.

To remove a name, make sure the name appears in the name box by using the *Forward>>>* or *<<< Backward* buttons. Click on the *Remove* button. When you are finished, click on *Return to Main Screen*. On the Alpha-log main screen, click with the mouse the down-pointing arrow under the label "Person to send message to". Each name that was entered during set-up will appear in a menu. Click on the persons name you wish to send a message to. Type your message in the message box, then click on the *SEND* button. The message will be received in a few seconds.

QUICK PAGE

Quick Page is used in conjunction with the Messenger feature. Quick Page allows you to quickly enter frequently used messages into the Messenger text box by selecting them from up to 12 pre-programmed messages. To setup your Quick Page messages, click on the *Set-up* menu on the main screen then select *Quick Page*. The Quick Page setup screen will appear. Enter up to 12 alphanumeric messages (80 characters max.) in the text boxes provided. When finished, click on the *Return* menu, then select *Return to main screen*. To use Quick Page, click on the *Quick Page* menu on the main screen, then select one of 12 stored messages. The message will appear in the Messenger text box. You can then manually add to/edit the text in the Messenger text box if you desire. To send the message (to the person/group selected in the *Person to send message to* menu), click on the *Send* button. Note: To clear the Messenger text box, click on *Clear* in the *Quick Page* menu.

MEMO PAGE

The *Memo page* feature allows you to send alphanumeric memos to the pocket pagers at specific times on particular days of the week. These memos can be used to remind staff members of important actions that must be taken such as administering medication to patients. From the main screen, click on the **Set-up** menu then click on **Memo page**. The Memo page set-up screen appears.

Alpha-log v4.1 Micro Logic Systems (Memo Page set-up)

memo # 1

<---back 1 ahead 1 ---> <--- back 10 ahead 10 --->

memo to be sent (up to 80 characters) capcode

Memo to send 2010209

Sunday
 Monday
 Tuesday
 Wednesday
 Thursday
 Friday
 Saturday

AM/PM hour minute

date to send: mm-dd-yyyy

time to send: 12:30 AM all dates

print setup data clear memo return to Main Screen

Memo Page set-up screen

Up to 300 memo's can be programmed. The current memo number is displayed near the upper left corner of the screen. The four buttons to the right of the memo # indicator allow you to move forward and backward through memo's. Enter the memo text you wish to send to the pager(s). Move the cursor to the capcode box using the mouse or TAB key. Enter the capcode (7 digits) of the pager (or pagers) that are to receive the memo.

You will now setup **WHEN** the memo will be sent. Select the time of day the memo is to be sent using the hour and minute up/down arrows. Click the AM/PM button to toggle the AM/PM status. If the memo is to be transmitted only once on a specific date (as a reminder) enter that date in the "date to send:" box in the format mm-dd-yyyy (example 01-01-1999). If a valid date is entered, it does not matter which, if any, day of week boxes are checked. If the memo is to be sent every week on specified days of the week, enter "all dates" (or leave blank) in the "date to send:" box and check one or more day of week boxes on the screen with the mouse.

If no memo text or capcode is entered, no page will be transmitted. Clicking the "clear memo" button clears the current entry. When done programming, click the "return to main screen" button. All memo programming is then stored on the computer's hard drive in C:\alog41\mpdata.dat.

Click on the "print setup data" button to print on paper all memo programming.

DISK SPACE

All call data is stored on the PC's hard disk drive (C:). Alpha-log will create five separate data files in the C:\alog41 directory for recording call activity. They are start.dat, end.dat, calltype.dat, roomnumb.dat and desption.dat. Recording each call uses about 100 bytes of disk space. Approximately 10,000 calls can be recorded in 1M of disk space. At some point in time, you may wish to back-up and remove these five data files from the hard drive to make space (see DATA BACKUP). Alpha-log will create five new data files with the same name if they are removed from the hard drive.

DATA BACKUP

As the call data base (consisting of the five data files listed above, see DISK SPACE) on the hard drive increases in size, it takes longer for the PC to process the data and generate reports. Alpha-Log contains a data backup feature which transfers the data base from the hard drive to one or more 3.5" floppy disks (1.44M). To do a backup, on the main screen, click on the *file* menu, then click *Backup call data*. Follow the on-screen prompts. Up to 12000 records will be put on each floppy disk. Alpha-Log will indicate the date and time range of records that have been stored on each disk. Label each disk with this information for future reference. The backup process, if successful, will remove all call data records from the hard drive. A new data base (blank) is automatically created on the hard drive to store new calls. To create reports from data stored on a floppy disk, go to the reports setup screen (as described in this manual) check the *A: (Backup disk)* option in the *get data from drive:* box. Alpha-Log will use the data from a floppy disk to generate the report.

GENERAL

Other applications (programs) can be run on the PC while Alpha-log is running. You can click on the "minimize" button on the main screen to remove the main screen from the PC monitor. When needed, restore the main screen window. The PC needs to be running for alpha-log to function. You may wish to shut off the PC's monitor during long periods of inactivity (such as over night), but leave the PC's CPU on so that alpha-log will continue to function.

If you wish to shut down the alpha-log software, click on the **File** menu, then click on **exit**.

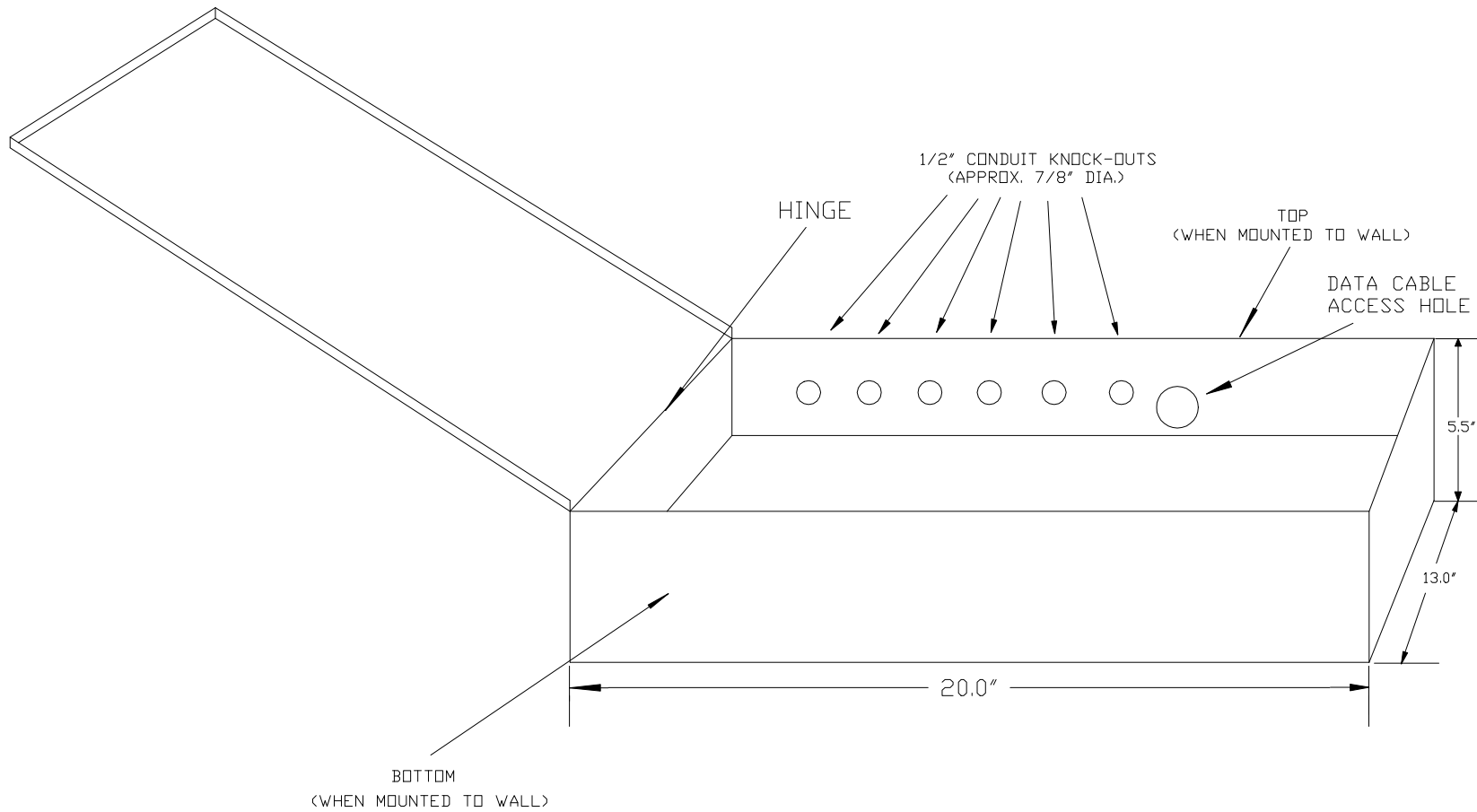
LIMITED WARRANTY

ELEMENTS OF WARRANTY: Alpha Communications® warrants, for one year, this Alpha Communications® product to be free from defects in materials and workmanship with only the limitations or exclusions set out below.

This warranty shall terminate one year after the date of original sale. The warranty is invalid if the product is modified, altered, improperly installed, or repaired by someone other than the manufacturer. Power transformers with blown fuses are excluded from this warranty. Care must be taken to avoid short circuiting the secondary terminals of the power transformer.

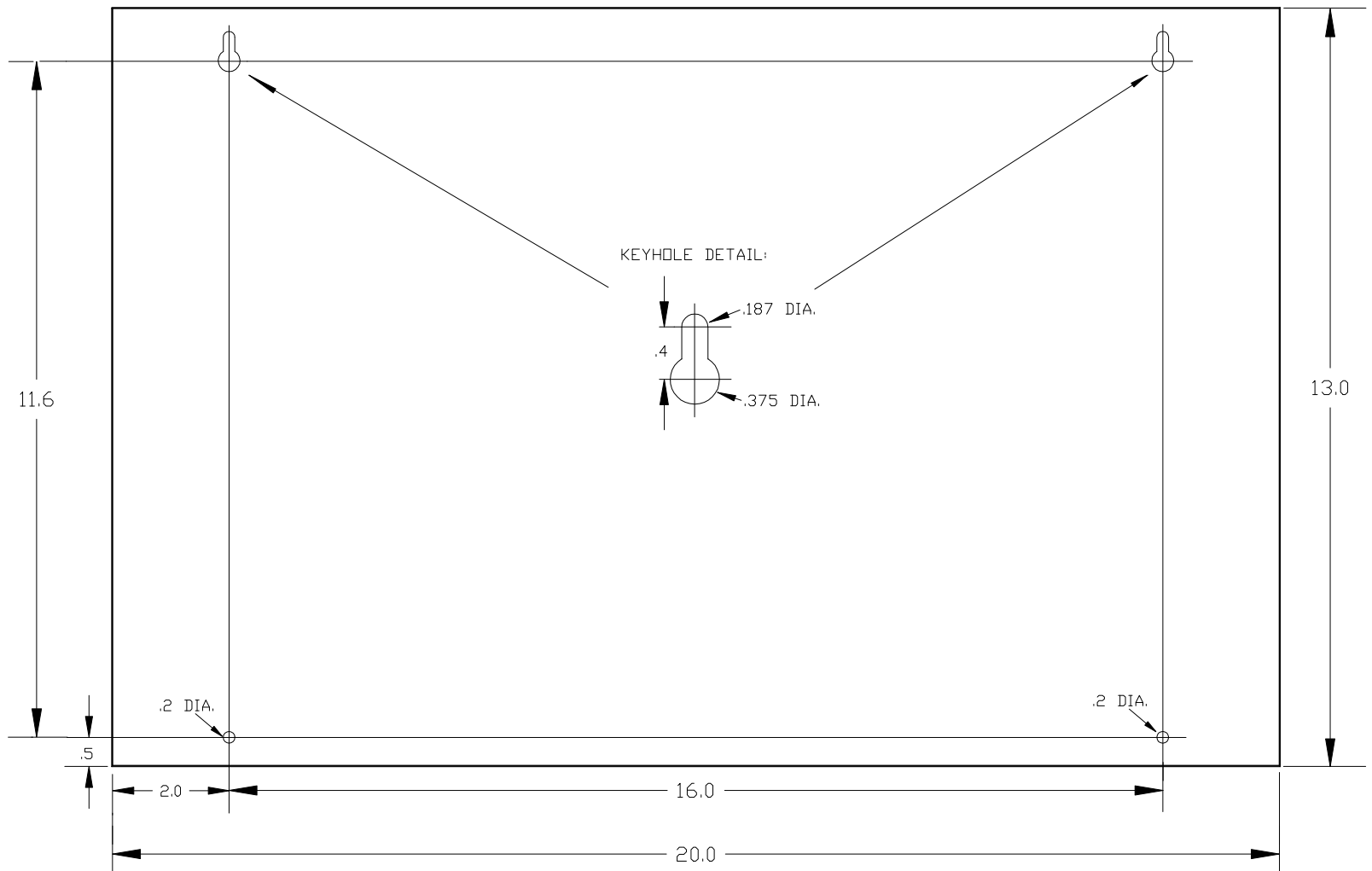
THE LIMITED WARRANTY SET FORTH ABOVE IS THE SOLE AND ENTIRE WARRANTY PERTAINING TO THE PRODUCT AND IS IN LIEU OF AND EXCLUDES ALL OTHER WARRANTIES OF ANY NATURE WHATSOEVER, WHETHER EXPRESS, IMPLIED OR ARISING BY OPERATION OF LAW, INCLUDING, BUT NOT LIMITED TO ANY IMPLIED WARRANTIES OF MERCHANTABILITY OR FITNESS FOR A PARTICULAR PURPOSE. THIS WARRANTY DOES NOT COVER OR PROVIDE FOR THE REIMBURSEMENT OR PAYMENT OF INCIDENTAL OR CONSEQUENTIAL DAMAGES. Some states do not allow this exclusion or limitation of incidental or consequential damages so the above limitation or exclusion may not apply.

STATEMENT OF REMEDY: In the event that the product does not conform to this warranty at any time this warranty is in effect, Alpha Communications® will repair the defect and return it to you without charge for parts, service, or any other cost incurred by Alpha Communications®. Customer is responsible for shipping costs for returning defective product. Alpha Communications® is responsible for shipping costs associated with returning the repaired product to the customer (UPS ground shipping). Customer must call Alpha Communications® and obtain authorization before returning equipment.



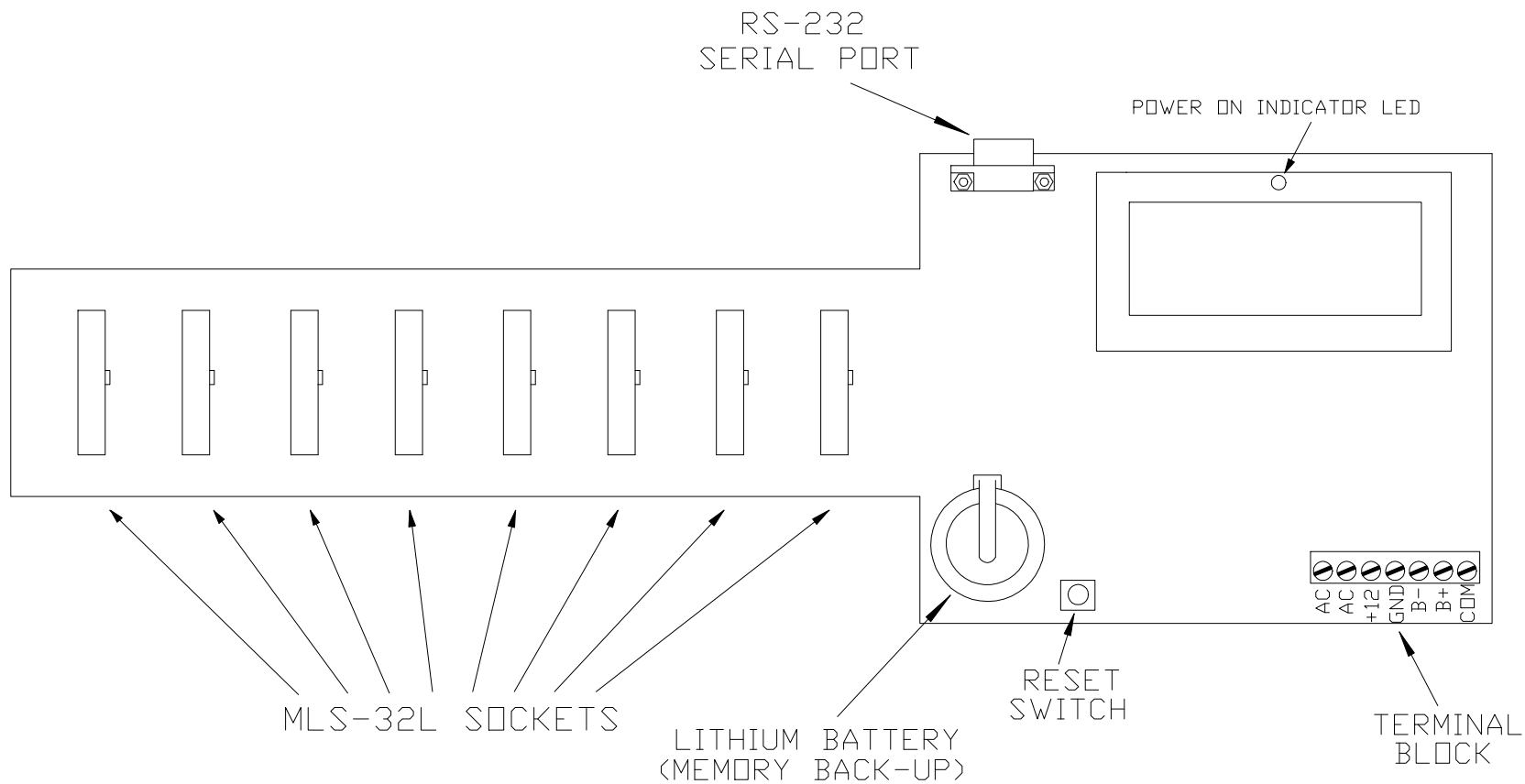
NOTE:
 ENCLOSURE CONTAINS MAGNETIC COVER LATCH
 AND COVER OPENING KNOB.

TITLE		MICRO LOGIC SYSTEMS	
		MLS-EC1 ENCLOSURE DIMENSIONS	
NUMBER	C022397-1	REVISION	C
		ORIG. SIZE	A
DATE: 2/23/97	REV. 9/21/98	SHEET	1 OF 1
FILE: EC1-DIMS		DRAWN BY:	MG

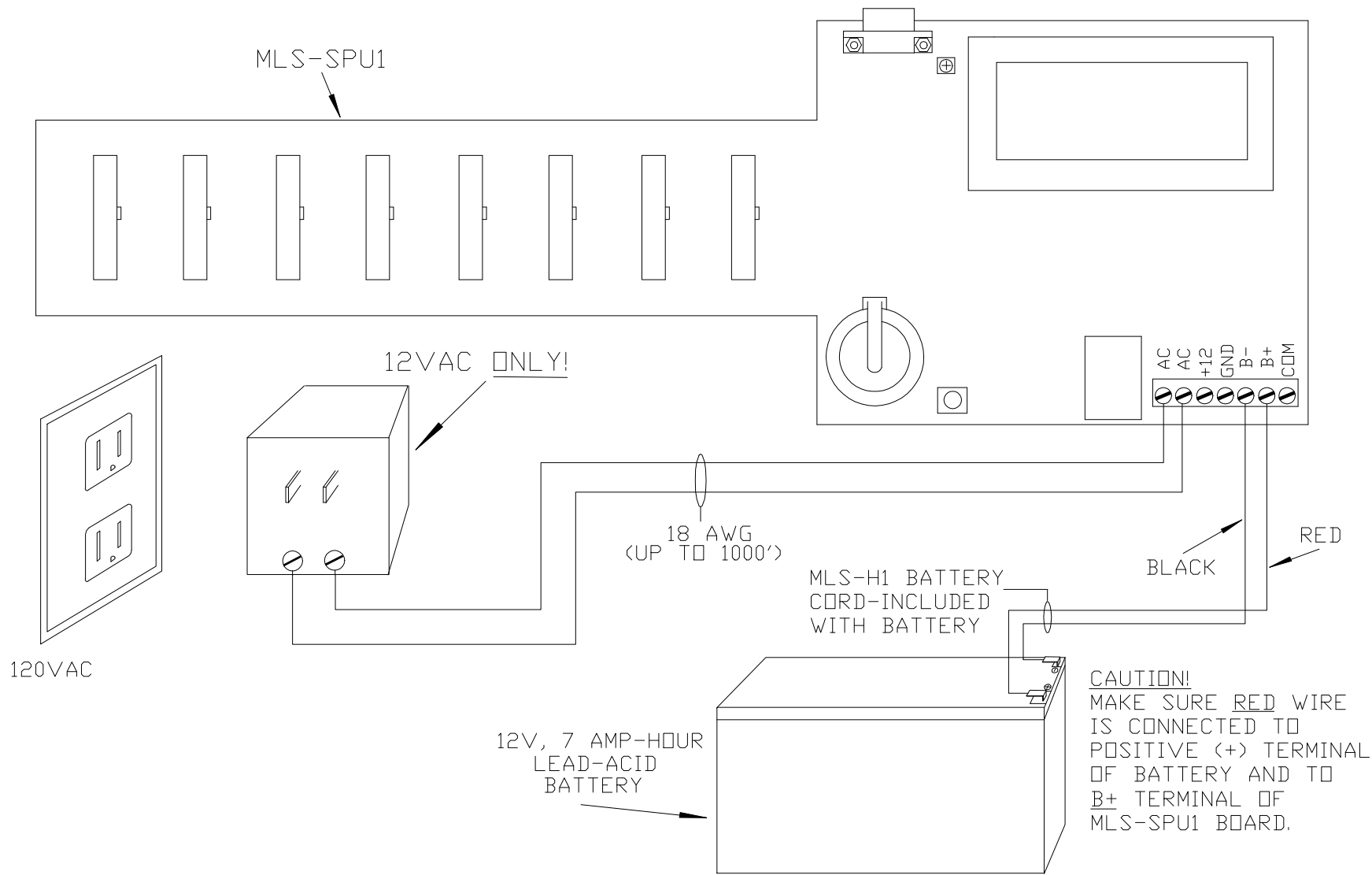


NOTE:
ALL DIMENSIONS IN INCHES

TITLE		MICRO LOGIC SYSTEMS	
		MLS-EC1 ENCLOSURE MOUNTING HOLE DIMENSIONS	
NUMBER	C022397-2	REVISION	
		ORIG. SIZE	A
DATE: 2/23/97		SHEET	1 OF 1
FILE: EC1-MNT		DRAWN BY:	MG

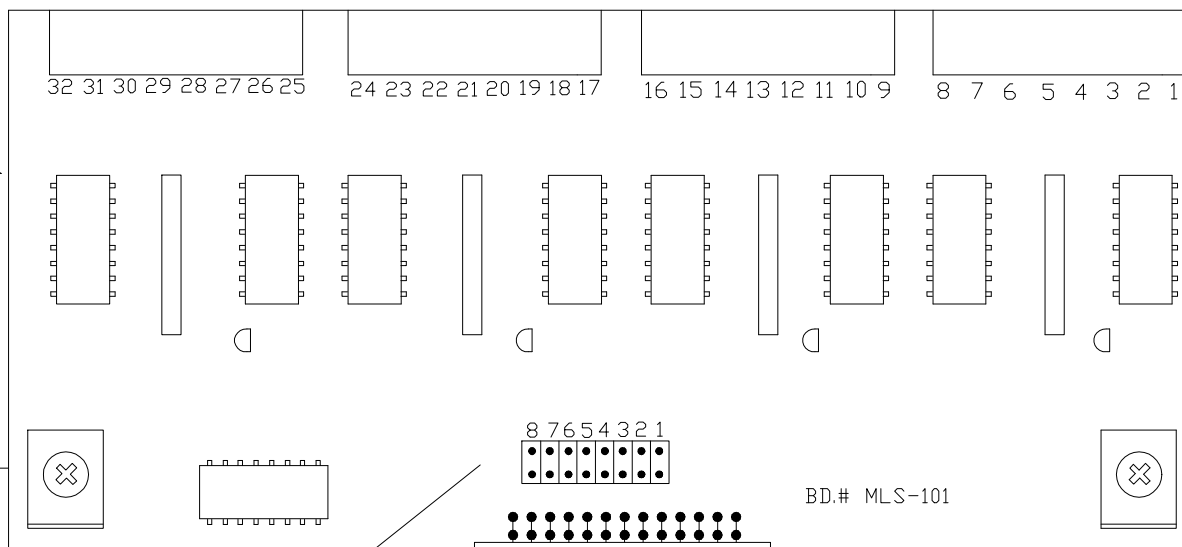


TITLE		MICRO LOGIC SYSTEMS	
MLS-SPU1 SIGNAL PROCESSING UNIT-FOR ALPHA-LOG			
NUMBER	C022499-1	REVISION	A
DATE: 2/24/99	SHEET	1	OF 1
FILE: SPUDVERD	DRAWN BY:	MG	

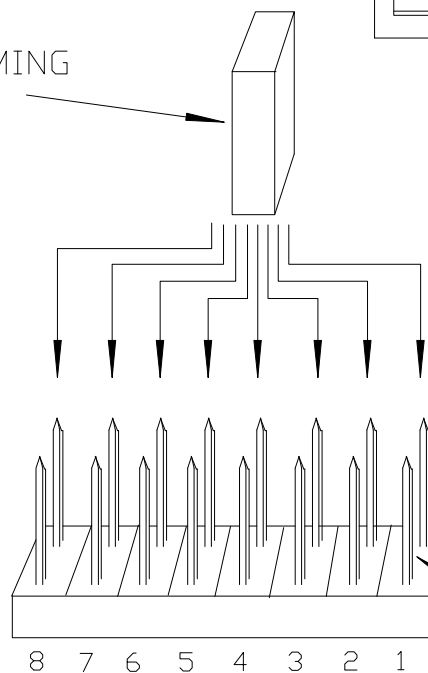


TITLE		MICRO LOGIC SYSTEMS	
POWER WIRING AND POWER BACK-UP BATTERY CONNECTIONS TO MLS-SPU1			
NUMBER	C022397-5	REVISION	ORIG. SIZE A
DATE: 2/23/97	SHEET	1	OF 1
FILE: PWR-BATT	DRAWN BY:	MG	

MLS-32L



PROGRAMMING JUMPER

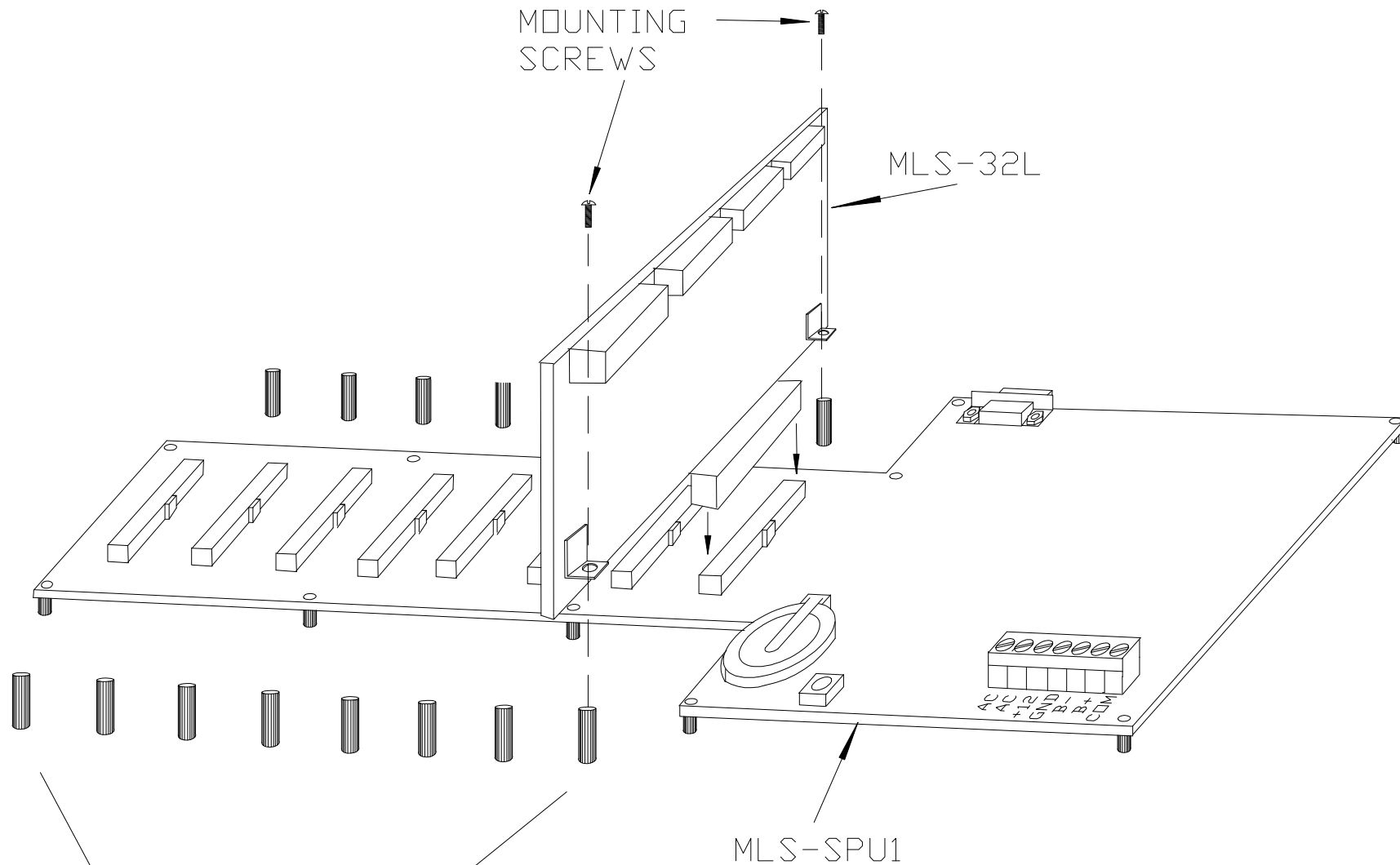


STAKE-PINS
(PAIR #1)

PLACE PROGRAMMING JUMPER OVER
STAKE-PIN PAIR 1-8 TO PROGRAM
A MLS-32L INPUT BOARD.

FOR EXAMPLE, PLACING THE PROGRAMMING
JUMPER OVER THE STAKE-PINS ON THE
FAR RIGHT WILL PROGRAM THIS MLS-32L
BOARD AS INPUT BOARD #1 (INPUTS 1-32).

TITLE		MICRO LOGIC SYSTEMS	
		PROGRAMMING THE MLS-32L	
NUMBER		C022397-3	REVISION
			ORIG. SIZE A
DATE: 2/23/97	SHEET	1 OF 1	
FILE: 32L-PRDG	DRAWN BY:	MG	



MOUNTING
SCREWS

MLS-32L

MLS-SPU1

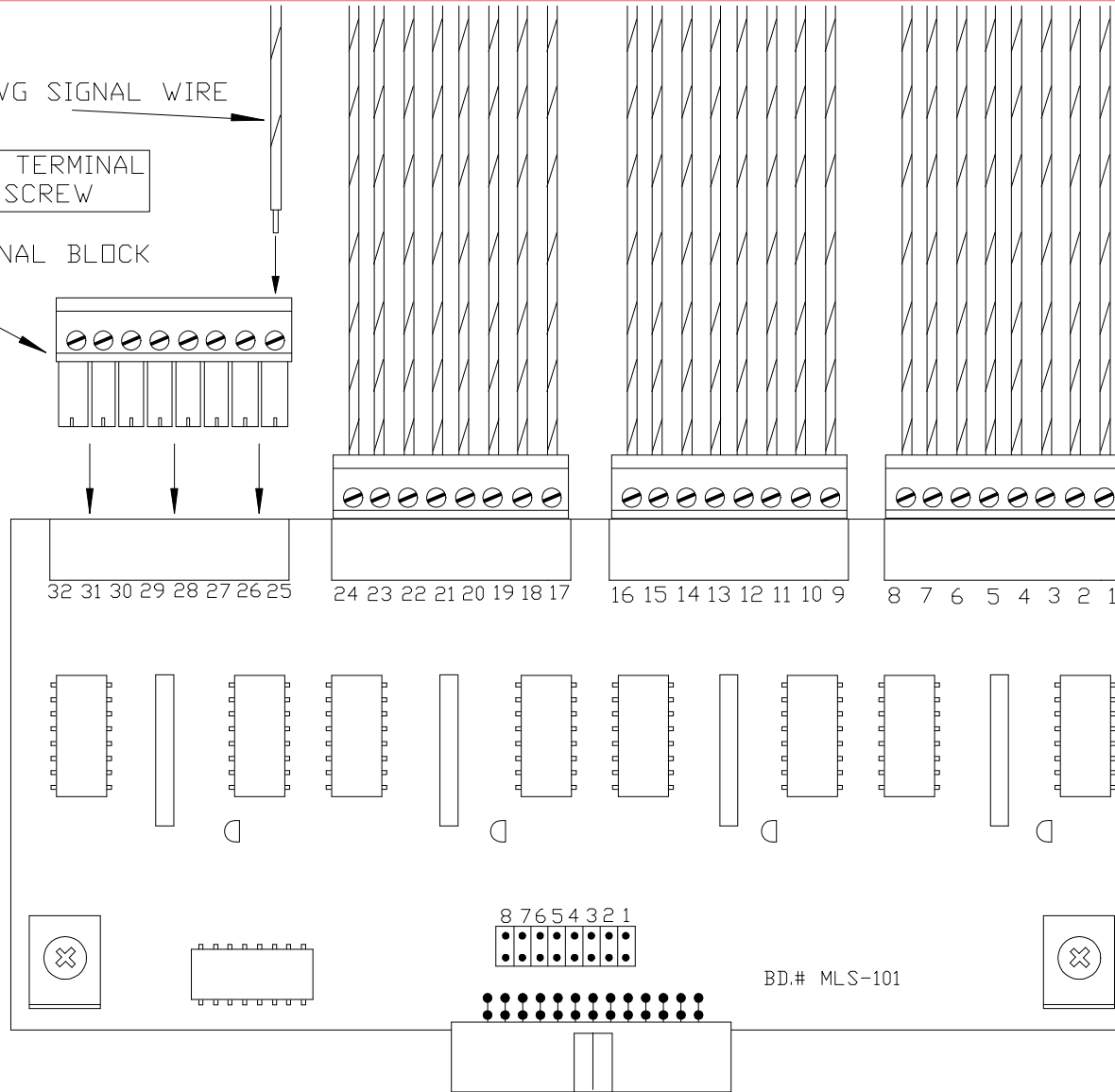
MLS-32L MOUNTING STUDS

TITLE		MICRO LOGIC SYSTEMS	
		INSTALLING MLS-32L BOARD	
NUMBER	C022499-2	REVISION	A
		ORIG. SIZE	A
DATE: 2/24/99		SHEET	1 OF 1
FILE: INSTIBDD		DRAWN BY:	MG

18-24 AWG SIGNAL WIRE

INSERT WIRE IN TERMINAL
BLOCK-TIGHTEN SCREW

PLUGGABLE TERMINAL BLOCK



TITLE		MICRO LOGIC SYSTEMS	
CONNECTING CALL/ALARM SIGNAL WIRE TO MLS-32L			
NUMBER	C030497-1	REVISION	
		ORIG. SIZE	A
DATE: 3/4/97		SHEET	1 OF 1
FILE: 32L-WIRE		DRAWN BY:	MG

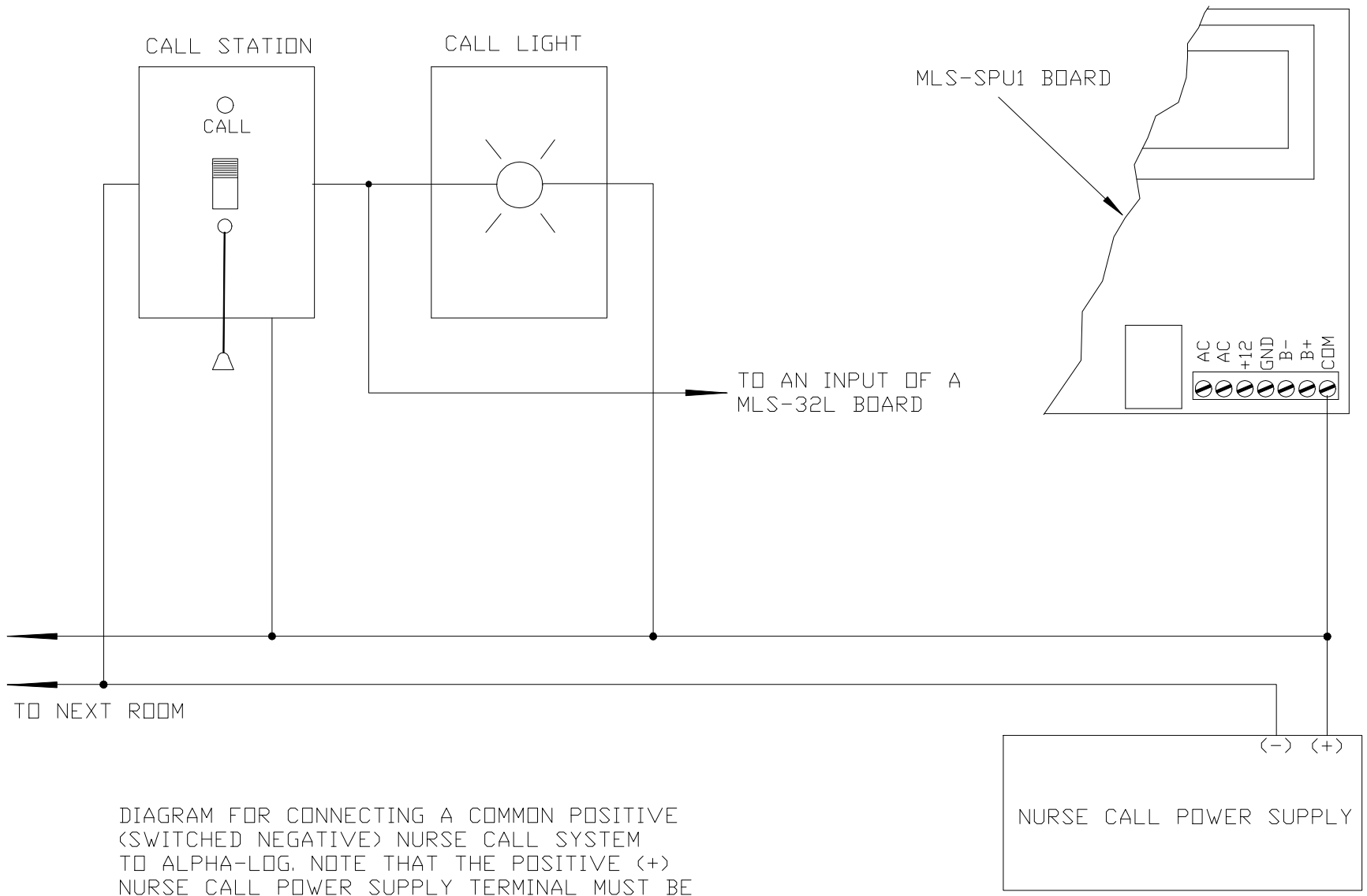


DIAGRAM FOR CONNECTING A COMMON POSITIVE (SWITCHED NEGATIVE) NURSE CALL SYSTEM TO ALPHA-LOG. NOTE THAT THE POSITIVE (+) NURSE CALL POWER SUPPLY TERMINAL MUST BE CONNECTED TO THE "COM" TERMINAL OF THE MLS-SPU1 BOARD.

TITLE		MICRO LOGIC SYSTEMS	
CONNECTING COMMON PLUS NURSE CALL SYSTEM TO ALPHA-LOG			
NUMBER	C031698-3	REVISION	
		ORIG. SIZE	A
DATE: 3/16/98		SHEET	1 OF 1
FILE: NCCOMP-L		DRAWN BY:	MG

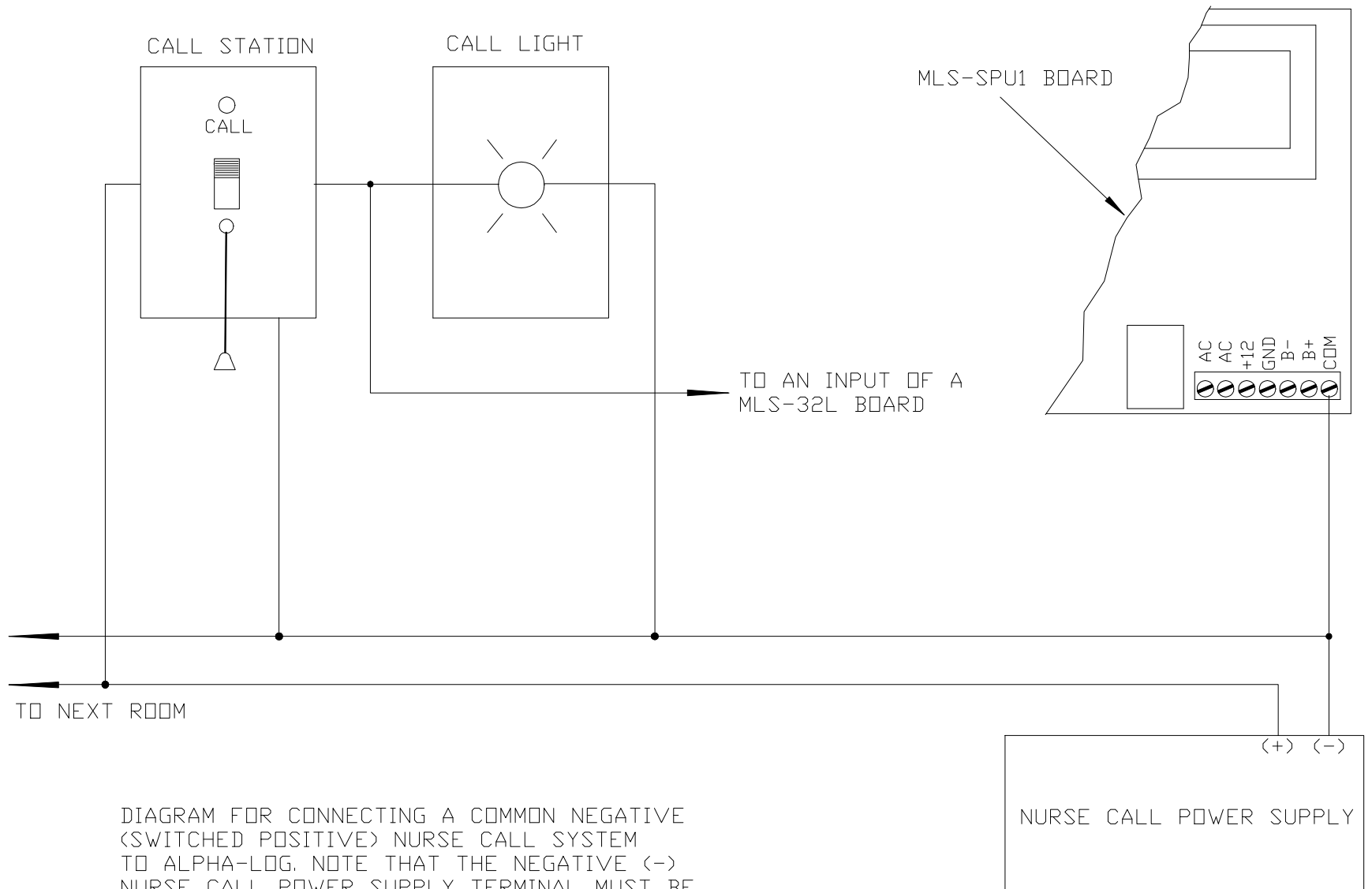
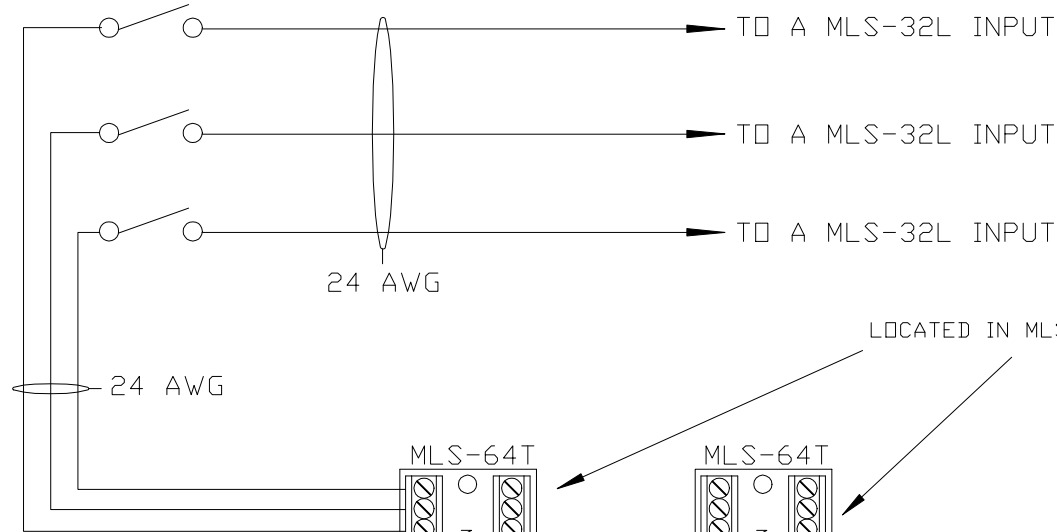


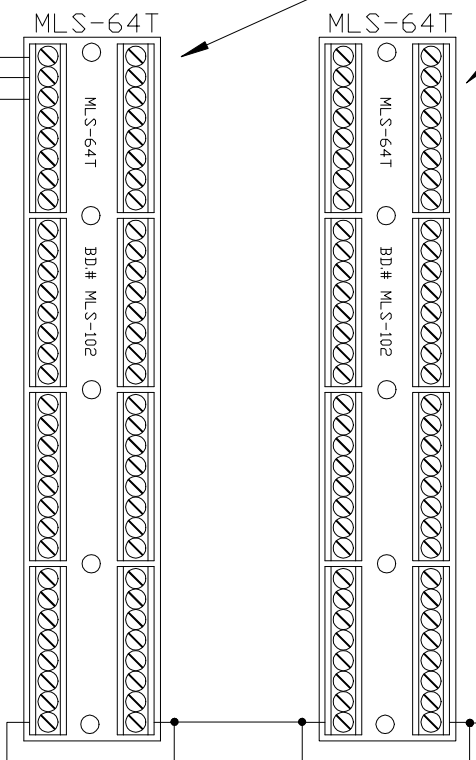
DIAGRAM FOR CONNECTING A COMMON NEGATIVE (SWITCHED POSITIVE) NURSE CALL SYSTEM TO ALPHA-LOG. NOTE THAT THE NEGATIVE (-) NURSE CALL POWER SUPPLY TERMINAL MUST BE CONNECTED TO THE "COM" TERMINAL OF THE MLS-SPU1 BOARD.

TITLE		MICRO LOGIC SYSTEMS	
CONNECTING COMMON NEGATIVE NURSE CALL SYSTEM TO ALPHA-LOG			
NUMBER		REVISION	
C031698-2		ORIG. SIZE A	
DATE: 3/16/98		SHEET 1 OF 1	
FILE: NCCOMN-L		DRAWN BY: MG	

NORMALLY OPEN CONTACTS
BEING MONITORED

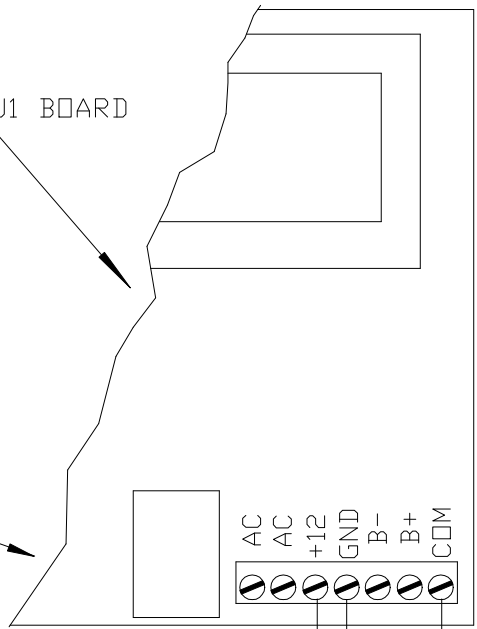


THESE WIRES MAY BE
CONNECTED TO ANY
TERMINAL (ON ANY
MLS-64T BOARD, IF
THERE ARE MORE THAN 1
MLS-64T BOARDS), IN
ANY ORDER.



LOCATED IN MLS-EC1 ENCLOSURE

MLS-SPU1 BOARD



NOTE:
MLS-64T BOARDS ARE OPTIONAL. THEY
PROVIDE CONVENIENT TERMINATION
OF ONE WIRE FROM EACH PAIR AND
ELECTRICALLY CONNECT THEM TO A
COMMON VOLTAGE.

JUMPER
WIRE

24 AWG

TITLE		MICRO LOGIC SYSTEMS	
N.D. ALARM/FAULT CONTACT WIRING TO ALPHA-LOG			
NUMBER	C111298-1	REVISION	ORIG. SIZE A
DATE: 11/12/98	SHEET	1 OF 1	
FILE: DRY-NOAL	DRAWN BY: MG		

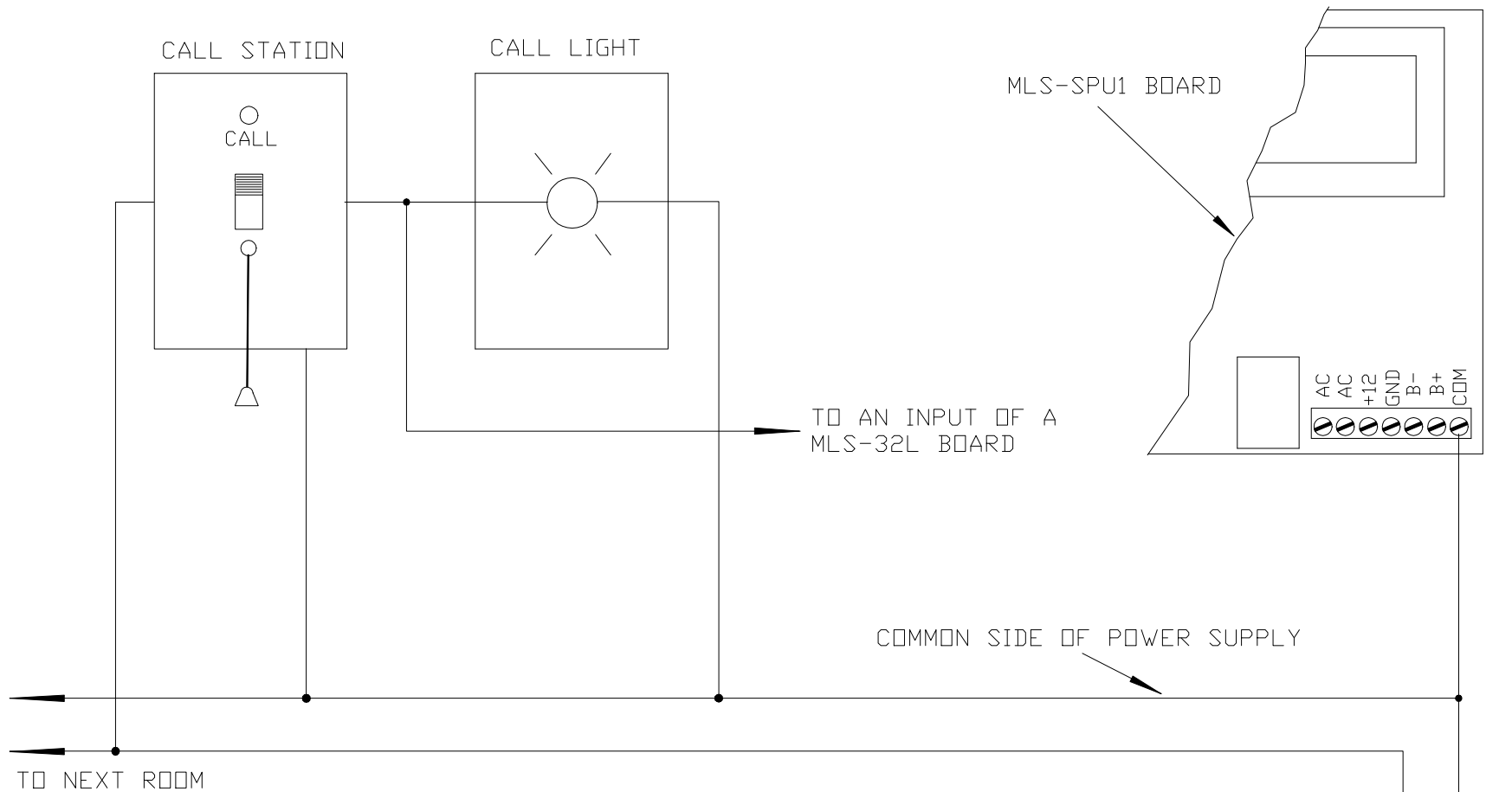
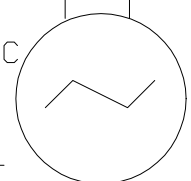


DIAGRAM FOR CONNECTING A LOW-VOLTAGE AC POWERED NURSE CALL SYSTEM TO ALPHA-LOG. NOTE THAT THE COMMON (UN-SWITCHED) SIDE OF THE AC POWER SUPPLY MUST BE CONNECTED TO THE "COM" TERMINAL OF THE MLS-SPU1 BOARD.

IF MORE THAN ONE AC POWER SUPPLY IS BEING USED, CONNECT THE COMMON SIDE OF EACH OF THEM TOGETHER.

LOW VOLTAGE AC (9-24VAC) POWER SUPPLY FOR NURSE CALL SYSTEM

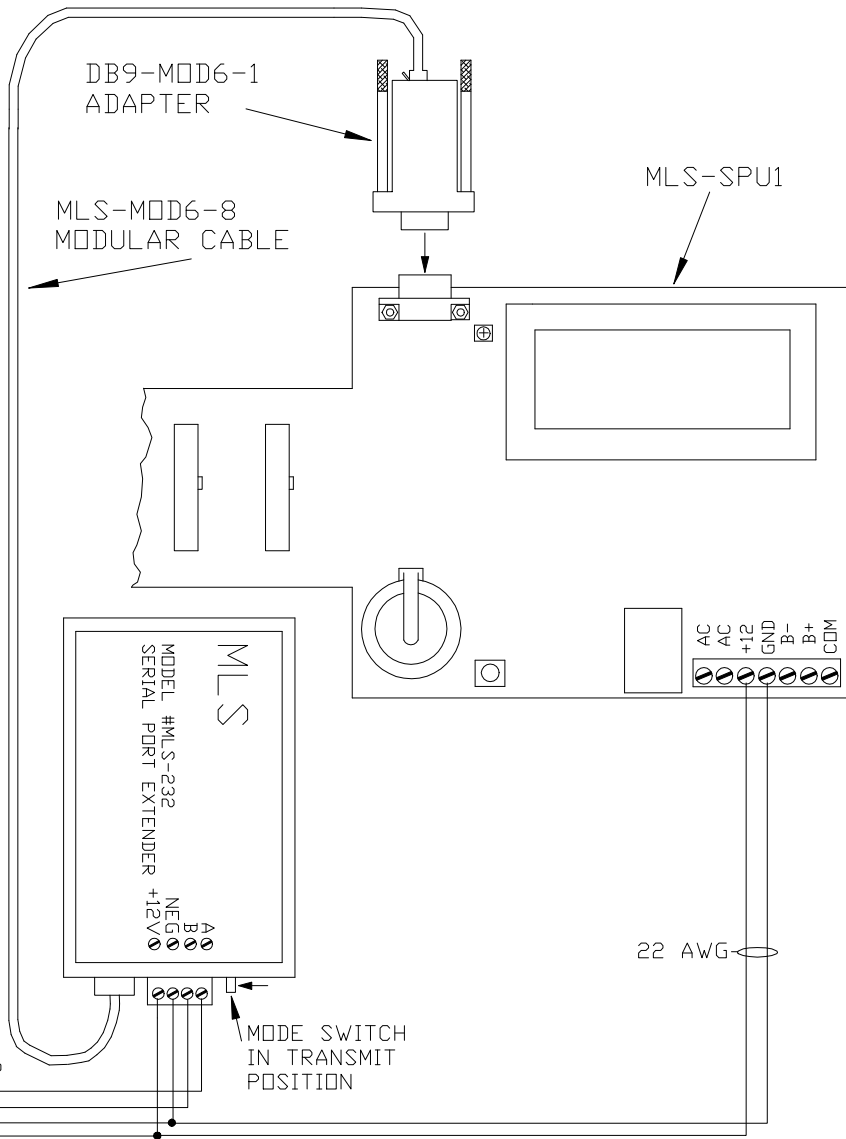


TITLE		MICRO LOGIC SYSTEMS	
CONNECTING AC POWERED NURSE CALL SYSTEM TO ALPHA-LOG			
NUMBER	C031698-1	REVISION	ORIG. SIZE A
DATE: 3/16/98		SHEET	1 OF 1
FILE: NCACALDG		DRAWN BY:	MG

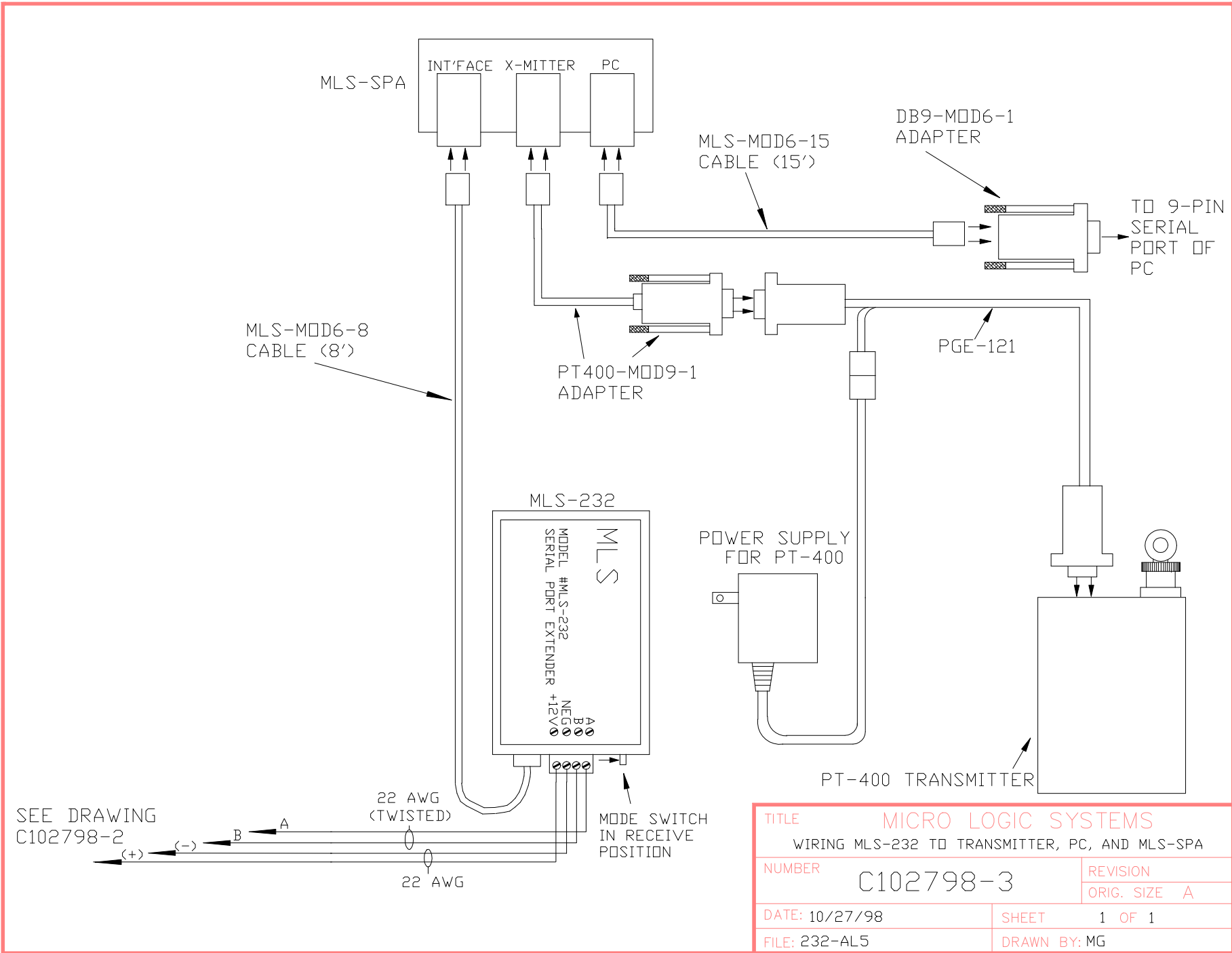
SEE DRAWING
C102798-3



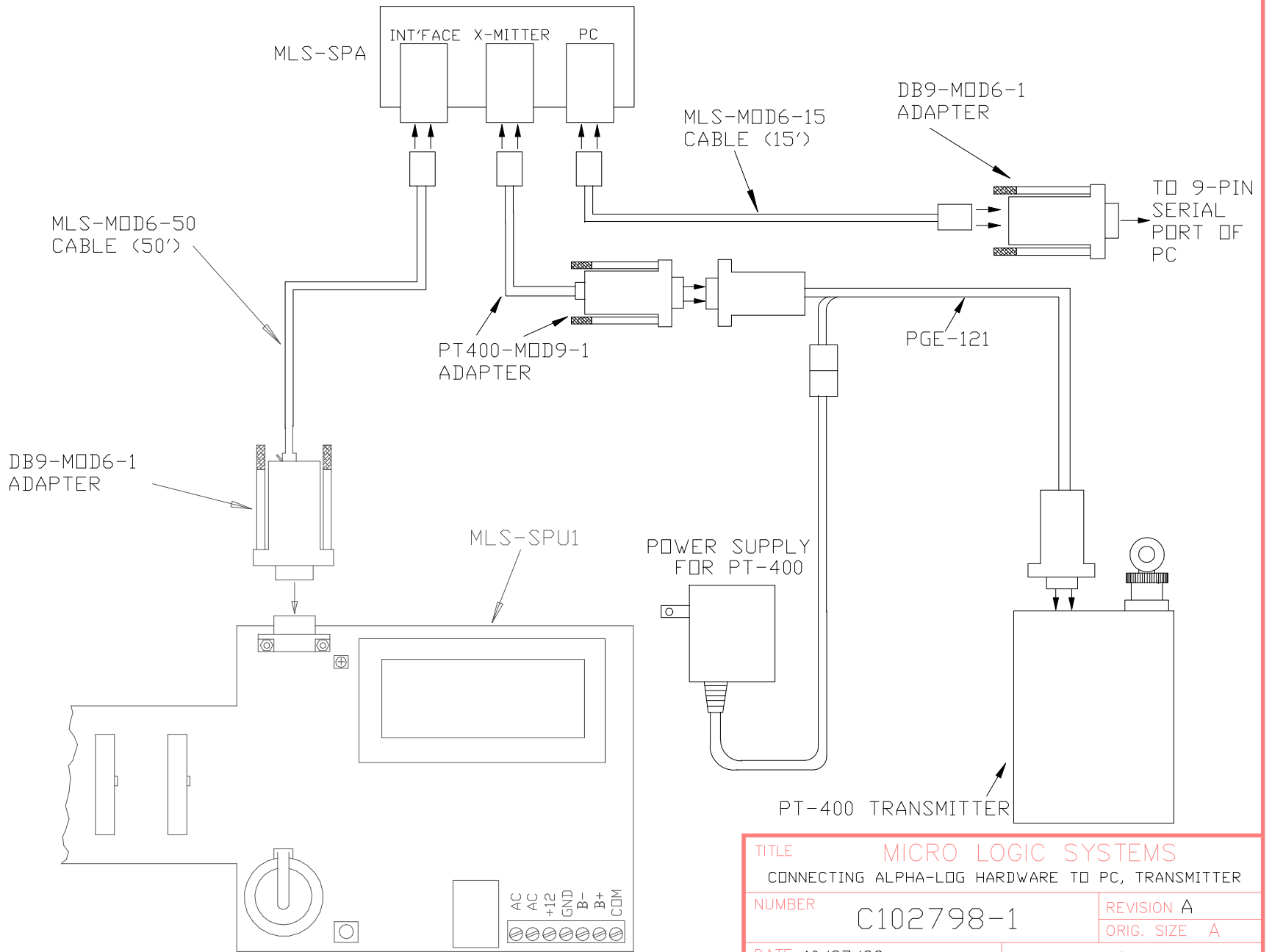
22 AWG
(TWISTED)
22 AWG



TITLE		MICRO LOGIC SYSTEMS	
WIRING MLS-232 PORT EXTENDER TO ALPHA-LOG INTERFACE			
NUMBER		C102798-2	REVISION
			ORIG. SIZE A
DATE: 10/27/98	SHEET	1 OF 1	
FILE: 232-AL4	DRAWN BY: MG		



TITLE		MICRO LOGIC SYSTEMS	
WIRING MLS-232 TO TRANSMITTER, PC, AND MLS-SPA			
NUMBER	C102798-3	REVISION	ORIG. SIZE A
DATE: 10/27/98	SHEET	1 OF 1	
FILE: 232-AL5	DRAWN BY: MG		



TITLE		MICRO LOGIC SYSTEMS	
CONNECTING ALPHA-LOG HARDWARE TO PC, TRANSMITTER			
NUMBER		C102798-1	REVISION A
			ORIG. SIZE A
DATE: 10/27/98	SHEET	1 OF 1	
FILE: 232-AL6	DRAWN BY: MG		